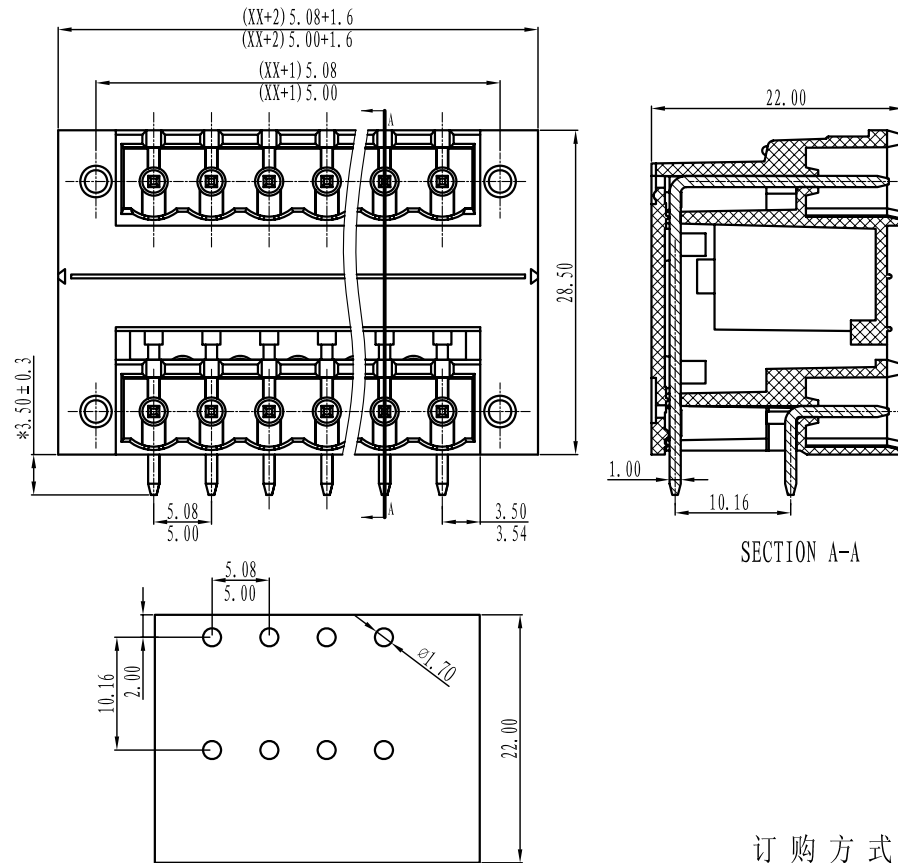




慈溪市万捷电子有限公司

CIXI WANJIE ELECTRONIC CO., LTD

产品规格书
product specification



电气性能/Electrical

参考标准/Standard: UL IEC
 额定电压/Rated voltage: 300V 320V
 额定电流/Rated current: 15A 10A
 接触电阻/Contact resistance: $20m\Omega$
 耐电压/Withstanding voltage: AC2000V/1Min
 绝缘电阻/Insulation resistance: $500M\Omega/DC500V$

机械性能/Mechanical

温度范围/Temp.Range: $-40^{\circ}C \sim +105^{\circ}C$
 瞬间温度/MAX Soldering: $+250^{\circ}C$, for 5 Sec

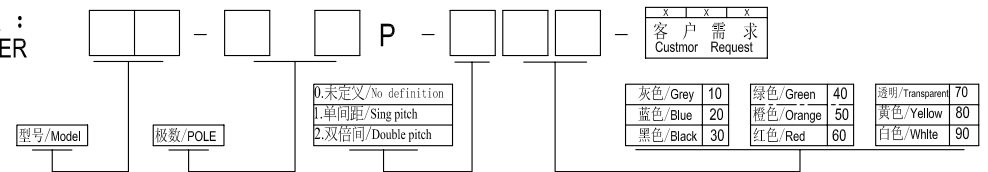
尺寸/Dimensions

间距/Pitch: 5.08mm/5.00mm
 极数/Poles: 2*2P-2*24P

材质及电镀/Material

塑件/Housing: PA66, UL94V-0
 焊针/Pin header: Brass, Tin plated
 螺母/Nut: M2.5 Brass

订购方式:
HOW TO ORDER



TOLERANCES EXCEPT AS NOTED

	linear dimension					fillet	chamfer	\sphericalangle short angle sid			\equiv	$-$	\square	$//$	\perp		
variable range	to 6	over 6 to 30	over 30 to 120	over 120 to 480	over 480 to	all	to 6	over 6 to 10	over 10 to 50	over 50 to 120	all	to 5	over 5 to 30	over 30 to 120	over 120 to		
tolerance	± 0.1	± 0.2	± 0.3	± 0.5	± 0.9	± 0.2	± 0.5	± 1	1'	30'	20'	10'	0.5	0.025	0.06	0.12	0.4

单位/UNITS	mm	尺寸/SIZE	A4	比例/SCALE	第一视角/FIRST ANGLE PROJECTION	
					名称/NAME	
慈溪市万捷电子有限公司 CIXI WANJIE ELECTRONIC CO., LTD					WJ2EDGRHM-2*XXP-1YY-00A	