

HFV15

AUTOMOTIVE RELAY



Typical Applications

Fog lamp & headlight control, Rear window defogger, Air-conditioning, Fuel pump control, Cooling fan control, Battery disconnection device

Features

- 40A switching capability
- 1 Form A & 1 Form C contact arrangement
- RoHS & ELV compliant
- Pin assignment similar to ISO 7588 part 1

CHARACTERISTICS

Contact arrangement	1A, 1C
Voltage drop (initial)	NO: Typ. 20mV, 250mV max. (at 10A) NC: Typ. 30mV, 250mV max. (at 10A)
Max. continuous current ¹⁾⁹⁾	NO: 60A (at 23°C) NC: 45A (at 23°C)
Max. switching current ⁹⁾	Make (NO): 150A ²⁾ Break (NO): 40A (Resistive, 13.5VDC)
Min. contact load	1A 6VDC
Electrical endurance	See "CONTACT DATA"
Mechanical endurance	1 x 10 ⁶ OPS (300 OPS/min)
Initial insulation resistance	100MΩ (at 500VDC)
Dielectric strength ³⁾	500VAC
Operate time ⁹⁾	Max.: 10ms (at nomi. vol.)
Release time ⁹⁾	Max.: 10ms ⁴⁾
Ambient temperature	-40°C to 125°C
Vibration resistance ⁵⁾⁹⁾	5Hz to 22.3Hz 10mm DA 22.3Hz to 500Hz 98m/s ²

Shock resistance ⁵⁾⁹⁾	294m/s ²
Flammability ⁶⁾	UL94-HB or better (meets FMVSS 302)
Termination	QC
Construction	Dust protected
Unit weight	Approx. 35g
Mechanical data ⁷⁾	housing retention (pull & push): 200N min. terminal retention (pull & push): 100N min. terminal resistance to bending (front & side): 10N min. ⁸⁾

- 1) For NO contacts, measured when applying 100% rated voltage on coil. For NC contacts, measured when applying zero voltage on coil.
- 2) Inrush peak current under lamp load, at 13.5VDC.
- 3) 1min, leakage current less than 1mA.
- 4) The value is measured when voltage drops suddenly from nominal voltage to 0 VDC and coil is not paralleled with suppression circuit.
- 5) When energized, opening time of NO contacts shall not exceed 1ms, when non-energized, opening time of NC contacts shall not exceed 1ms, meantime, NO contacts shall not be closed.
- 6) FMVSS: Federal Motor Vehicle Safety Standard.
- 7) Only valid for QC version.
- 8) Test point is at 2mm away from terminal end, and after removing testing force, the terminal transfiguration shall not exceed 0.5mm.
- 9) Only for the 12VDC coil voltage type at room temperature.

CONTACT DATA ⁵⁾

Load voltage	Load type		Load current A			On/Off ratio		Electrical endurance ³⁾ OPS	Contact material	Load wiring diagram ⁴⁾	Ambient temp.
			1C		1A	On s	Off s				
			NO	NC	NO						
13.5VDC	Resistive	Make	40	30	40	2	2	1×10 ⁵	AgSnO ₂	See diagram 1	See Ambient Temp. Curve
		Break	40	30	40						
	Lamp ¹⁾	Make	150 ²⁾	---	150 ²⁾	2	2	1×10 ⁵	AgSnO ₂	See diagram 2	
		Break	30	---	30						
	Inductive	Make	80	40	80	2	2	1×10 ⁵	AgSnO ₂	See diagram 3	
		Break	33	20	33						

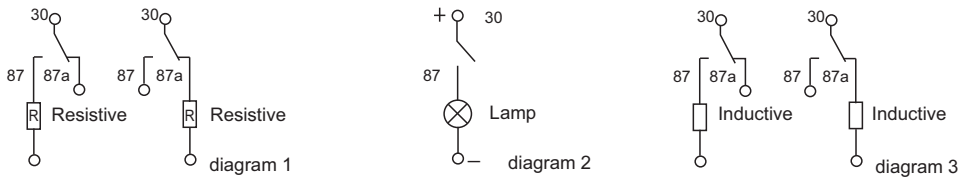


HONGFA RELAY

ISO9001, ISO/TS16949, ISO14001, OHSAS18001, IECQ QC 080000 CERTIFIED

2013 Rev. 1.00

- 1) The load in the table excludes flasher. When applied in flasher, a special silver alloy (AgSnO₂) contact material should be used and the customer special code should be (170) as a suffix. Please heed the anode and cathode's request when wired, terminal 30 should connect with anode.
- 2) Corresponds to the peak inrush current on initial actuation (cold filament).
- 3) A low resistive or diode suppression device in parallel to the relay coil increases the release time and reduces the life time caused by increased erosion and / or higher risk of contact welding.
- 4) The load wiring diagrams are listed below (Ratings of NO, NC are tested based on different samples separately) :



- 5) Loads mentioned in this chart is for relays with no parallel diode or Zener Diode. For those with parallel diode, Zener Diode or other components, please contact Hongfa for more technical supports.
Please also contact Hongfa if the actual application load is different from what mentioned above.

COIL DATA							at 23°C	
Nominal voltage VDC	Pick-up voltage VDC max.	Drop-out voltage VDC min.	Coil resistance $\times(1\pm 10\%)\Omega$	Parallel resistance ²⁾ $\times(1\pm 5\%)\Omega$	Equivalent resistance Ω	Power consumption W	Max. allowable overdrive voltage ¹⁾ VDC	
							at 23°C	at 85°C
12	7.2	1.2	90	---	---	1.6	20.2	15.7
12	7.2	1.2	90	680	79.5	1.8	20.2	15.7

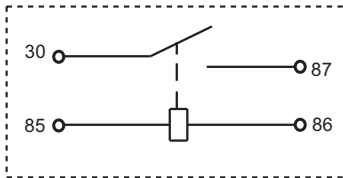
- 1) Max. allowable overdrive voltage is stated with no load applied.
- 2) Illustrated with the type with parallel resistor (680 Ω , 12V).

ORDERING INFORMATION								
Type	HFV15 /	12	-Z	1	T	J	-R	(XXX)
Coil voltage	12: 12VDC							
Contact arrangement	H: 1 Form A		Z: 1 Form C					
Version	1: QC Terminal							
Contact material	T: AgSnO ₂							
Length of terminal	J: QC Terminal without hole							
Parallel coil ¹⁾ components	R: Parallel transient suppression resistors(680 Ω , 12V) R1: Parallel transient suppression resistors(560 Ω , 12V) D: Parallel transient suppression diode,with anode connected to terminal#85 D1: Parallel transient suppression diode,with anode connected to terminal#86							
Customer special code	e.g. (170) stands for flasher load							

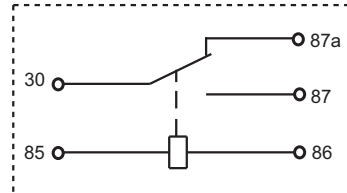
1) If the switch-off peak voltage of coil is required to be smaller than 100V, R1 shall be used (measured voltage of 12V is 13.5V);
If parallel diode, Zener Diode or other components are required, please contact Hongfa for more technical supports.

Wiring Diagram

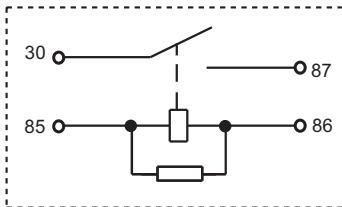
HFV15/□□-H□□□□



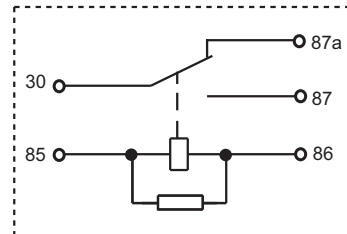
HFV15/□□-Z□□□□



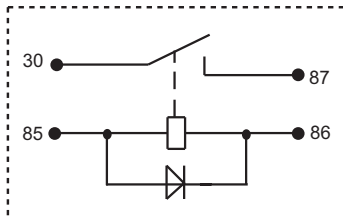
HFV15/□□-H□□□□-R



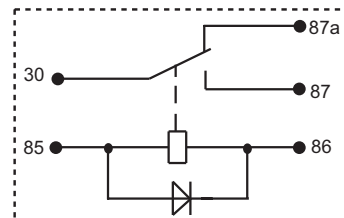
HFV15/□□-Z□□□□-R



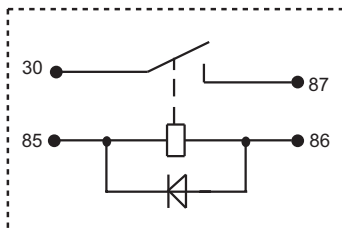
HFV15/□□-H□□□□-D



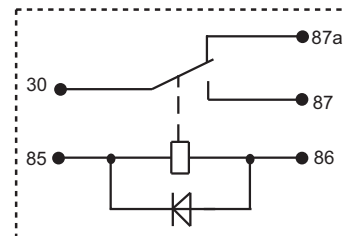
HFV15/□□-Z□□□□-D



HFV15/□□-H□□□□-D1

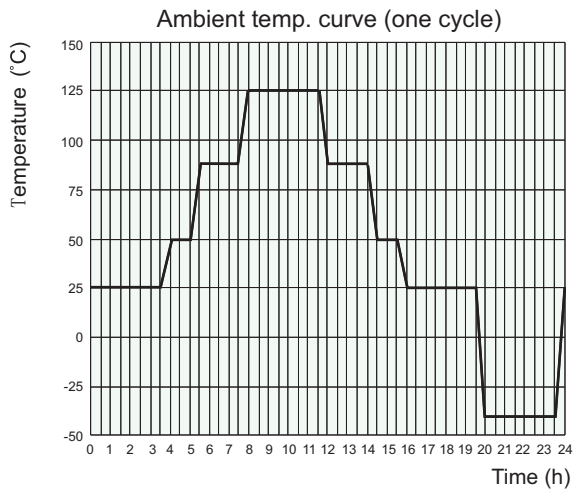


HFV15/□□-Z□□□□-D1



CHARACTERISTIC CURVES

Ambient temperature curve of the electrical endurance test



- 1) The minimum temperature is -40°C .
- 2) The maximum temperature is 125°C .

Disclaimer

This datasheet is for the customers' reference. All the specifications are subject to change without notice. Before referring to this datasheet, please make sure that you have read and understood "Explanation to Terminology and Guidelines of Automotive Relay & Module" in our catalogue of Automotive Relay & Module.

In case there is specific criterion (such as mission profile, technical specification, PPAP etc.) checked and agreed by and between customer and Hongfa, this specific criterion should be taken as standard regarding any requirement on Hongfa product.

We could not evaluate all the performance and all the parameters for every possible application. Thus the user should be in a right position to choose the suitable product for their own application. If there is any query, please contact Hongfa for the technical service. However, it is the user's responsibility to determine which product should be used only.

© Xiamen Hongfa Electroacoustic Co., Ltd. All rights of Hongfa are reserved.