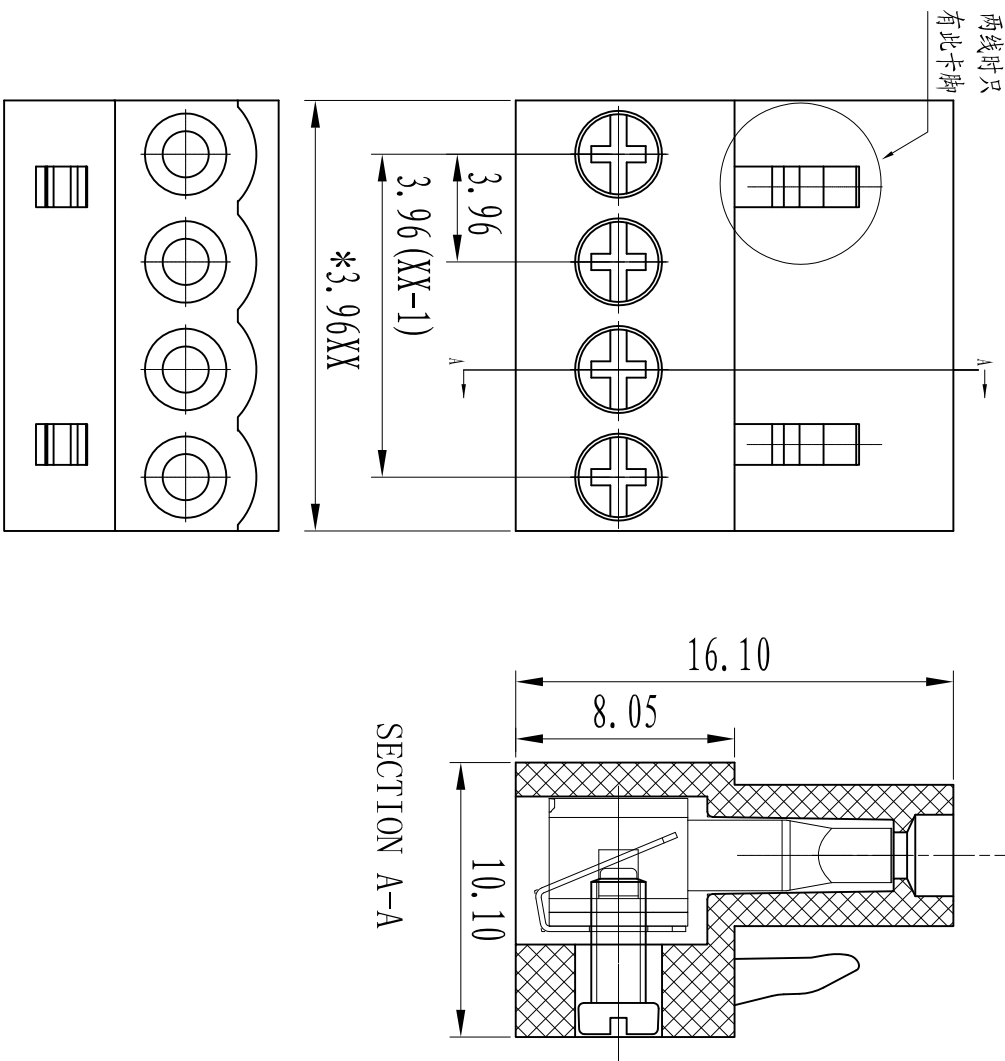




慈溪市万捷电子有限公司 CIXI WANJIE ELECTRONIC CO., LTD

产品规格书
THE SPEC SHEET



电气性能/Electrical	
参考标准/Standard	UL IEC
额定电压/Rated voltage	300V 250V
额定电流/Rated current	8A 10A
接触电阻/Contact resistance	20mΩ
绝缘电阻/Insulation resistance	500MΩ/DC500V
使用线径/Wire range	26-16AWG 1mm ²
耐电压/Wrth standing voltage	AC 2000V/1 Min
机械性能/Mechanical	
最大扭矩/Torque(Max)	0.2Nm(1.7Lb.in)
温度范围/Temp.Range	-40°C~+105°C
尺寸/Dimensions	
间距/Pitch	3.96mm
极数/Poles	02-24p
材料及电镀/Material	
塑件/Housing	PA66, UL94V-0
螺丝/Screws	M2.0 Steel Zn plated
弹片/Clamp	Brass, Ni plated
夹片/Shrapnel	Brass, Ni plated

linear dimension(Tolerances Standard GB/T 14486-2008)	over 6 to 10	over 10 to 18	over 18 to 30	over 30 to 50	over 50 to 80	over 80 to 120	over 120 to 160	over 160 to 200	over 200 to 250	over 250 to 500	over 500 to 1000	over 1000 to 2000	over 2000 to 5000	over 5000 to 10000	over 10000 to 20000	over 20000 to 50000	over 50000 to 100000	over 100000 to 200000	over 200000 to 500000	over 500000 to 1000000
	±0.1	±0.14	±0.19	±0.25	±0.32	±0.43	±0.57	±0.72	±0.88	±1.05	±1.25	0.5	0.025	0.06	0.12	0.4				

单位/UNITS	mm	尺寸/SIZE	A4	比例/SCALE	4:1
名称/TITLE	第三视图/THIRD ANGLE PROJECTION				
名称/TITLE	HT390K-3.96-XXP-1YY-00A				



慈溪市万捷电子有限公司
CIXI WANJIE ELECTRONIC CO., LTD