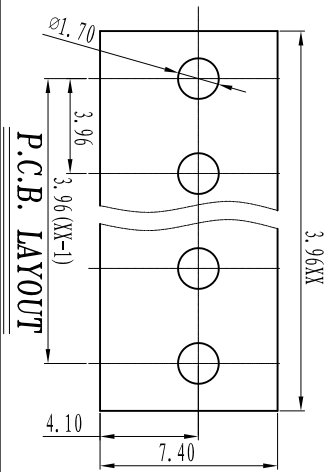




# 慈溪市万捷电子有限公司 CIXI WANJIE ELECTRONIC CO., LTD

产品规格书  
THE SPEC SHEET

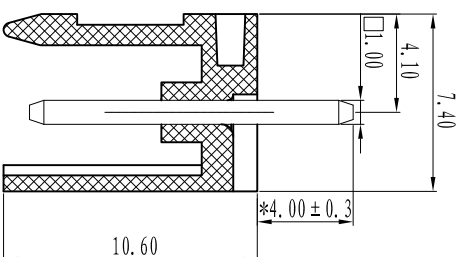
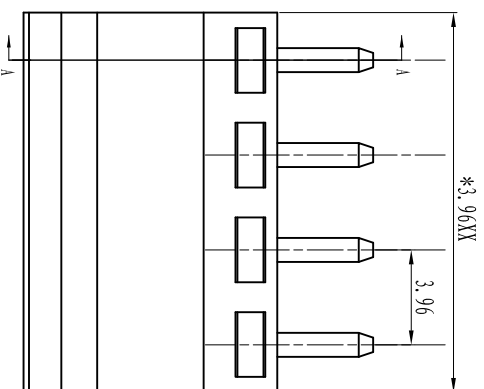


P.C.B. LAYOUT

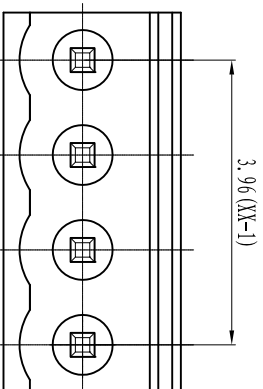
参考标准 / Standard	UL	IEC
额定电压 / Rated voltage	300V	250V
额定电流 / Rated current	8A	10A
接触电阻 / Contact resistance	20mΩ	
绝缘电阻 / Insulation resistance	500MΩ /DC500V	
耐电压 / With standing voltage	AC 2000V/1 Min	
机械性能 / Mechanical		
温度范围 / Temp. Range	-40°C~+105°C	
瞬时温度 / MAX Soldering	+250°C for 5 Sec	

### 尺寸 / Dimensions

间距 / Pitch	3.96mm
极数 / Poles	2-24p
材料及电镀 / Material	PA66, UL94V-0
塑件 / Housing	Brass, Tin plated
焊脚 / Pin header	



SECTION A-A



### linear dimension (Tolerances Standard GB/T 14486-2008)

variable range	tolerance	±0.1	±0.14	±0.19	±0.25	±0.32	±0.43	±0.57	±0.72	±0.88	±1.05	±1.25	0.5	0.025	0.06	0.12	0.4
over 6 to 10	over 10 to 18	over 18 to 30	over 30 to 50	over 50 to 80	over 80 to 120	over 120 to 160	over 160 to 200	over 200 to 250	over 250 to 300	over 300 to 350	over 350 to 400	over 400 to 450	all	5 to 30	30 to 120	120 to 150	

单位 / UNITS	mm
尺寸 / SIZE	A4
比例 / SCALE	4:1

慈溪市万捷电子有限公司  
CIXI WANJIE ELECTRONIC CO., LTD

名称 / TITLE	第三视图 / THIRD ANGLE PROJECTION
	HT390V/3.96-XXP-1YY-00A