

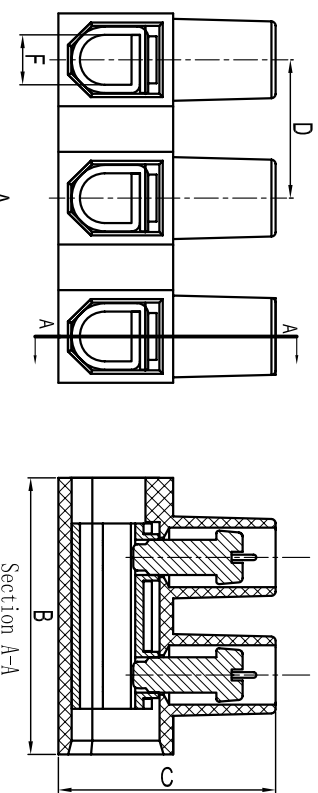


SHUIYUANPU[®]

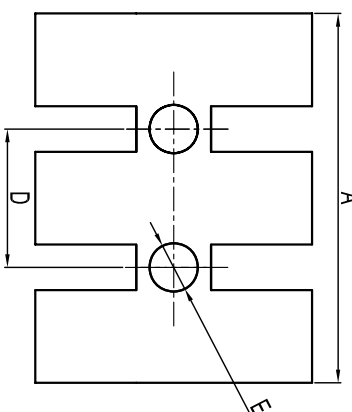
慈溪市万捷电子有限公司

CIXI WANJIE ELECTRONIC CO., LTD

产品规格书
product specification



型号 Model	线径 Wire range mm ²	IEC 技术参数 IEC datashheet		UL 技术参数 UL datashheet		尺寸mm Dimensions							
		电流 Rated current	电压 Rated Voltage	电流 Rated current	电压 Rated Voltage	螺丝 Screw	Unit	A	B	C	D	E	F
MY8HS+0	0.5-4.0	24A	450V	17.5A	300V	M2.6x5	(mm)	93.7	17.0	13.0	8.0	Ø2.8	2.9*3.4
MY10HS+0	1.0-6.0	41A	450V	28A	300V	M3.0x6	(mm)	116.5	20.3	15.7	10.0	Ø3.2	3.45*4.0



订购方式：
HOW TO ORDER

- P - -

未指定 / No. definition
 1. 半间距 / 50g pitch
 2. 双间距 / Double pitch

客户需求 / Customer Request

灰色 / Grey	10	绿色 / Green	40
蓝色 / Blue	20	橙色 / Orange	50
黑色 / Black	30	红色 / Red	60
		透明 / Transparent	70
		黄色 / Yellow	80
		白色 / White	90

TOLERANCES EXCEPT AS NOTED

	linear dimension			fillet	chamfer	短角 short angle	侧边 side	公差 tolerance
variable range	over 6 to	over 30 to	over 120 to	all to	over 6 to	over 10 to	over 50 to	
	6 to	30 to	120 to		6 to	10 to	50 to	
tolerance	±0.1	±0.2	±0.3	±0.2	±0.5	±1	1°	0.4

单位 / UNITS: mm 尺寸 / SIZE: A4 比例 / SCALE: 2:1

第一视角 / FIRST ANGLE PROJECTION

名称 / NAME: MY □ HS+0-XP-11Y-00A

慈溪市万捷电子有限公司
CIXI WANJIE ELECTRONIC CO., LTD