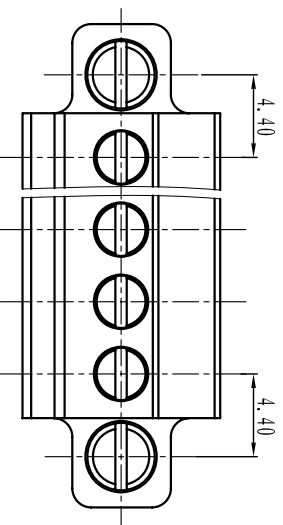
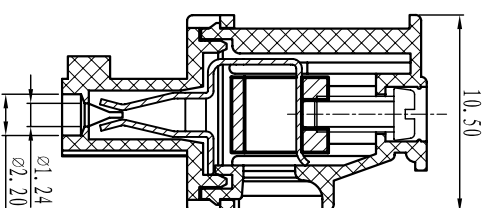
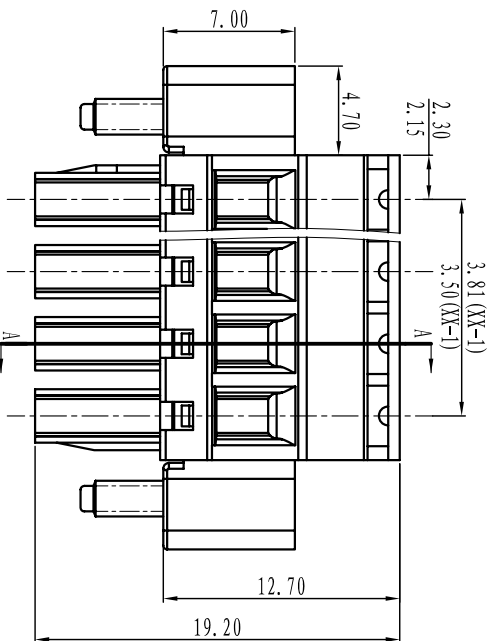




慈溪市万捷电子有限公司

CIXI WANJIE ELECTRONIC CO., LTD

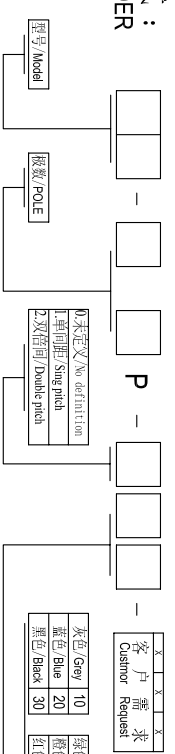
产品规格书
product specification



TOLERANCES EXCEPT AS NOTED

	linear dimension	fillet	chamfer	short angle sid																
variable range	to 6 to 30	over 6 to 30	over 120 to 480	all	to 6 to 10	over 6 to 10	over 10 to 50	over 50 to 120	all	to 5 to 30	over 5 to 30	over 30 to 120	over 120							
tolerance	±0.1	±0.2	±0.3	±0.5	±0.9	±0.2	±0.5	±1	1°	30'	20'	10'	0.5	0.025	0.06	0.12	0.4			

订购方式：
HOW TO ORDER



- 电气性能/Electrical
 - 参考标准/Standard: ILL IEC
 - 额定电压/Rated voltage: 300V 250V
 - 额定电流/Rated current: 8A 10A
 - 接触电阻/Contact resistance: 20mΩ
 - 使用线径/Wire range: 28-16AWG 1.5mm²
 - 耐电压/Withstanding voltage: AC2000V/1Min
 - 绝缘电阻/Insulation resistance: 500MΩ/DC500V
- 机械性能/Mechanical
 - 温度范围/Temp.Range: -40°C~+105°C
 - 扭矩/Torque: 0.2Nm(1.71b`in)
 - 剥线长度/Strip length: 6-7mm
- 尺寸/Dimensions
 - 间距/Pitch: 3.81mm
 - 极数/Poles: 2P-24P
- 材料及电镀/Material
 - 塑件/Housing: PA66, U94V-0
 - 螺丝/Screws: M2, steel Zinc plated
 - 固定螺丝/Screws: M2.5, steel Zinc plated
 - 方块/Wire guard: Brass, Ni plated
 - 夹子/Clamp: Phosphor bronze, Ni plated

单位/UNITS	mm	尺寸/SIZE	A4	比例/SCALE	
名称/NAME	WJ15EDCKRM-XXP-1YY-00A				

