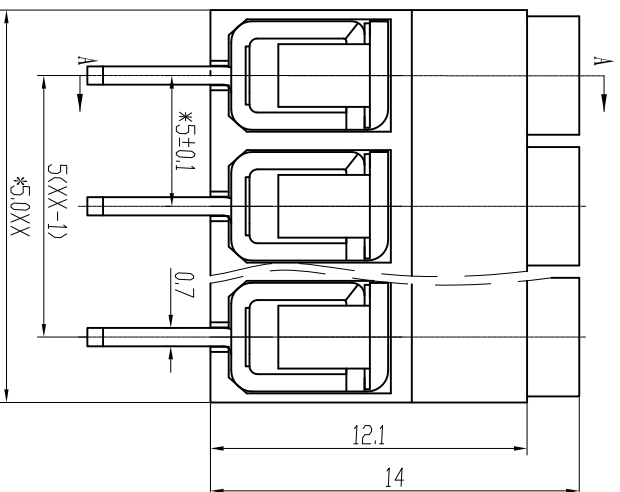
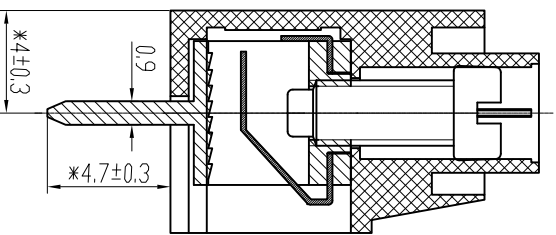
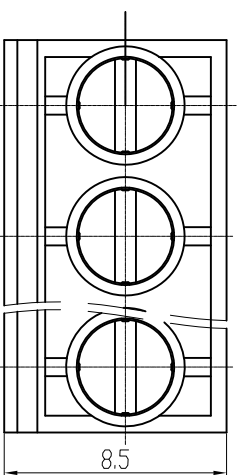
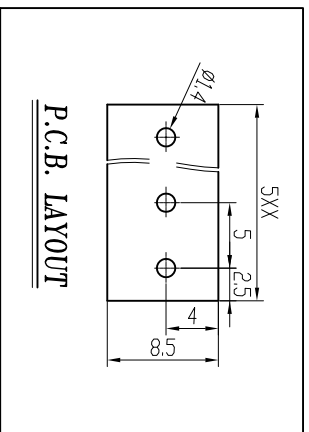




# 慈溪市万捷电子有限公司 CIXI WANJIE ELECTRONIC CO., LTD

产品规格书  
THE SPEC SHEET



### 电气性能/Electrical

参考标准/Standard	UL	IEC
额定电压/Rated voltage	300V	250V
额定电流/Rated current	15A	22A
接触电阻/Contact resistance	20mΩ	
绝缘电阻/Insulation resistance	500MΩ/DC500V	
使用线径/Wire range	22-12AWG	2.5mm <sup>2</sup>
耐电压/Wrth standing voltage	AC 2000V/1 Min	

### 机械性能/Mechanical

扭矩/Torque	0.4Nm(3.6lb.in)
温度范围/Temp.Range	-40°C~+105°C
瞬时温度/MAX Soldering	+250°C, for 5 Sec
剥线长度/Strip Length	6-7mm

### 尺寸/Dimensions

间距/Pitch	5.0mm
极数/Poles	2~24P
材质及电镀/Material	PA66, UL94V-0
塑件/Housing	M2.5, Steel, Zn plated
螺丝/Screws	Brass, Tin plated
焊脚/Pin header	

linear dimension(Tolerances Standard GB/T 14486-2008)	over	±0.14	over	±0.19	over	±0.25	over	±0.32	over	±0.43	over	±0.57	over	±0.72	over	±0.88	over	±1.05	over	±1.25	
	to	6	to	10	to	18	to	30	to	50	to	80	to	120	to	160	to	200	to	250	
variable range	6	to	10	to	18	to	30	to	50	to	80	to	120	to	160	to	200	to	250	to	250
tolerance	±0.1	±0.14	±0.19	±0.25	±0.32	±0.43	±0.57	±0.72	±0.88	±1.05	±1.25	0.5	0.025	0.06	0.12	0.4					

单位/UNITS	mm	尺寸/SIZE	A4	比例/SCALE	7:2
----------	----	---------	----	----------	-----

名称/TITLE	第三视图/THIRD ANGLE PROJECTION
	WJ167-5.0-XXP-1YY-00A

慈溪市万捷电子有限公司  
CIXI WANJIE ELECTRONIC CO., LTD