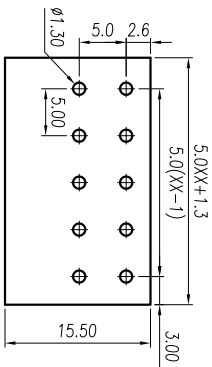


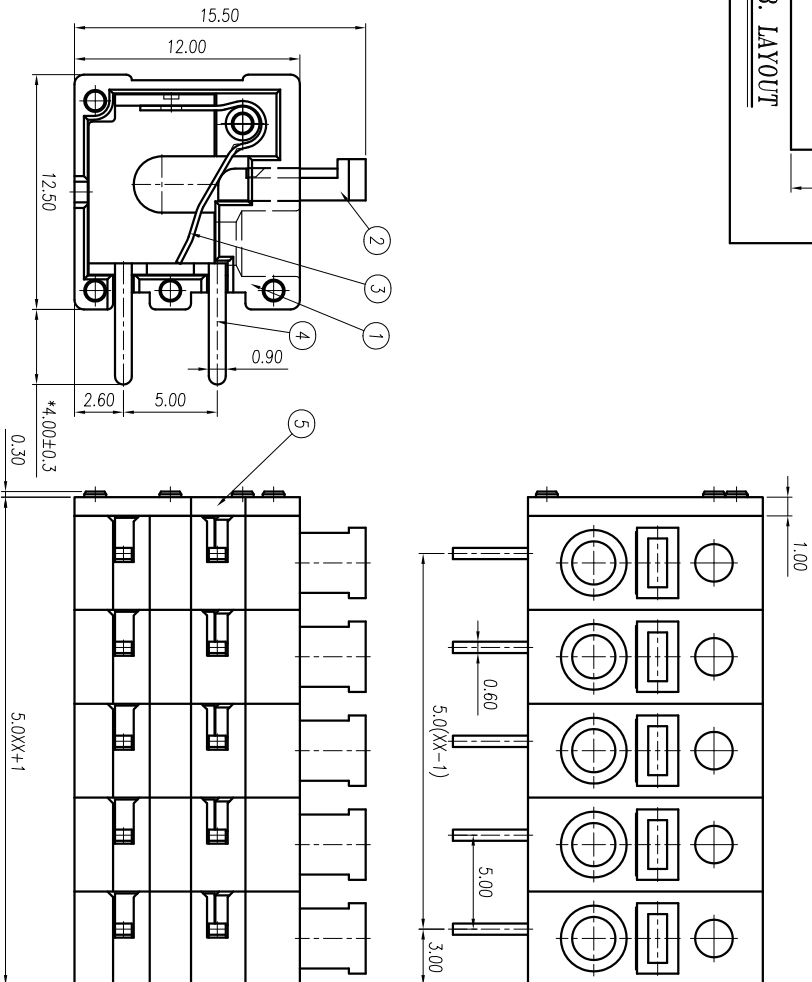


慈溪市万捷电子有限公司 CIXI WANJIE ELECTRONIC CO., LTD

产品规格书
THE SPEC SHEET



P.C.B. LAYOUT



参考标准/Standard	UL	IEC
额定电压/Rated voltage	300V	250V
额定电流/Rated current	10A	15A
接触电阻/Contact resistance	20mΩ	
绝缘电阻/Insulation resistance	500MΩ/DC500V	
使用线径/Wire range	26-14AWG	1.5mm ²
耐电压/Wrth standing voltage	AC 2000V/1 Min	
机械性能/Mechanical		
瞬时温度/MAX Soldering	+250°C for 5 Sec	
剥线长度/Steip Length	11mm	
温度范围/Temp Range	-40°C~+105°C	

尺寸/Dimensions

间距/Pitch

5mm

极数/Poles

1-XXp

材质及电镀/Material

PA66, UL94V-0

塑件/Housing

Brass, Tin plated

焊脚/Pin header

Stainless steel

弹片/Wire guard

linear dimension(Tolerances Standard GB/T 14486-2008)	≡	—	□	∥	⊥											
tolerance	±0.1	±0.14	±0.19	±0.25	±0.32	±0.43	±0.57	±0.72	±0.88	±1.05	±1.25	0.5	0.025	0.06	0.12	0.4
variable range	6 to 10	6 to 10	10 to 18	18 to 30	30 to 50	50 to 80	80 to 120	120 to 160	160 to 200	200 to 250	250 to 250	all	5 to 5	5 to 30	30 to 120	120 to 120
over	6	10	18	30	50	80	120	160	200	250	250	5	5	30	120	120

第三视图/THIRD ANGLE PROJECTION



单位/UNITS	mm	尺寸/SIZE	A4	比例/SCALE	3:1
----------	----	---------	----	----------	-----

慈溪市万捷电子有限公司
CIXI WANJIE ELECTRONIC CO., LTD

名称/TITLE
WJ211R-5.0-XXP-1YY-00A