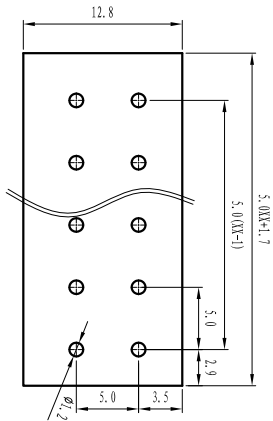


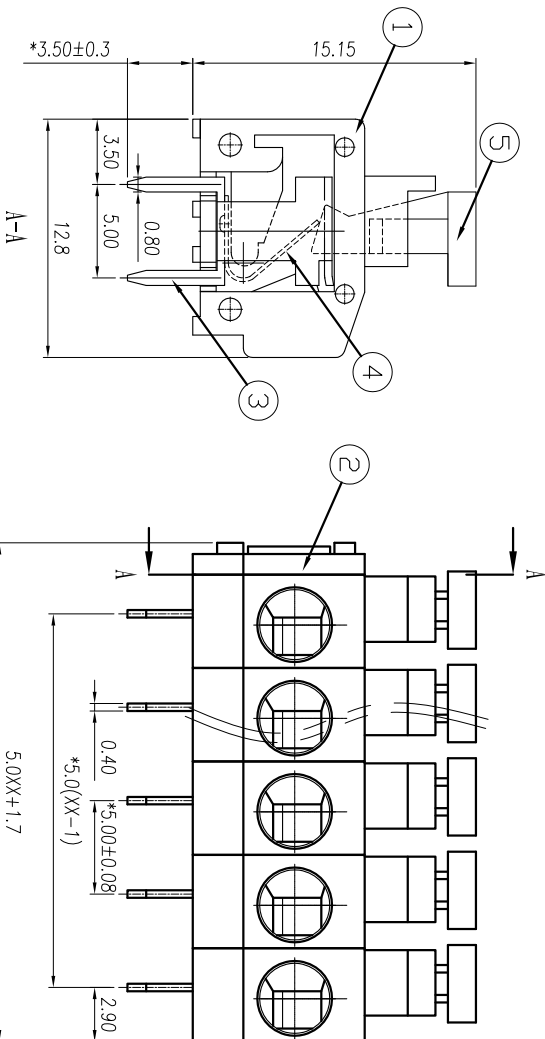
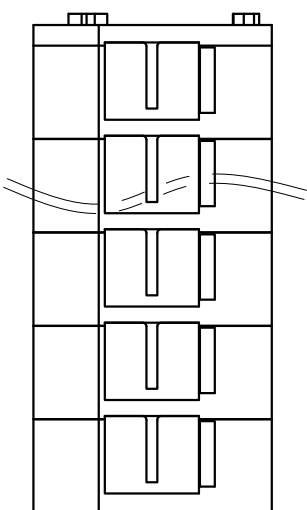


慈溪市万捷电子有限公司 CIXI WANJIE ELECTRONIC CO., LTD

产品规格书
THE SPEC SHEET



P.C.B. LAYOUT



	linear dimension(Tolerances Standard GB/T 14486-2008)												≡	—	□	//	⊥
tolerance	±0.1	±0.14	±0.19	±0.25	±0.32	±0.43	±0.57	±0.72	±0.88	±1.05	±1.25	0.5	0.025	0.06	0.12	0.4	
variable range	6 to 10	6 to 10	10 to 18	10 to 18	30 to 50	30 to 50	50 to 80	80 to 120	120 to 160	160 to 200	200 to 250	all to 5	5 to 30	30 to 120	120 to 120		

尺寸/Dimensions

间距/Pitch

5.0mm

极数/Poles

1-XXp

材料及电镀/Material

塑件/Housing

PA66, UL94V-0

弹片/Shrapnel

Stainless steel

焊脚/Pin header

Brass, Tin plated

参考标准/Standard

UL IEC

额定电压/Rated voltage

300V 250V

额定电流/Rated current

6A 15A

接触电阻/Contact resistance

20mΩ

绝缘电阻/Insulation resistance

500MΩ/DC500V

使用线径/Wire range

22~18AWG 0.75mm²

耐电压/Wrth standing voltage

AC 2000V/1 Min

机械性能/Mechanical

剥线长度/Steip Length

9-10mm

温度范围/Temp.Range

-40°C~+105°C

瞬时温度/MAX Soldering

+250°C, for 5 Sec

单位/UNITS	mm	尺寸/SIZE	A4	比例/SCALE	2.5:1
----------	----	---------	----	----------	-------

第三视图/THIRD ANGLE PROJECTION



慈溪市万捷电子有限公司
CIXI WANJIE ELECTRONIC CO., LTD

名称/TITLE
WJ230A-5.0-XXP-1Y-00A