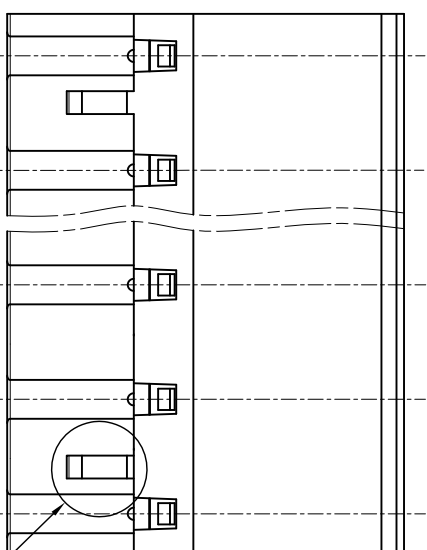
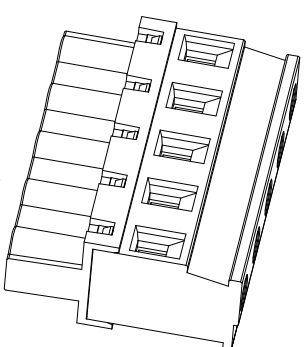
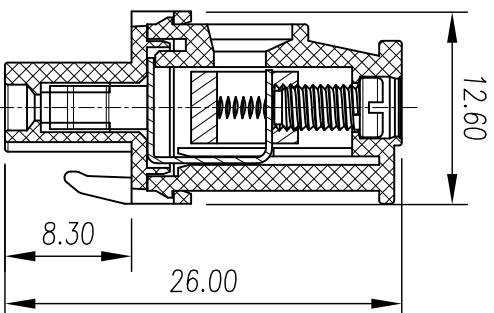
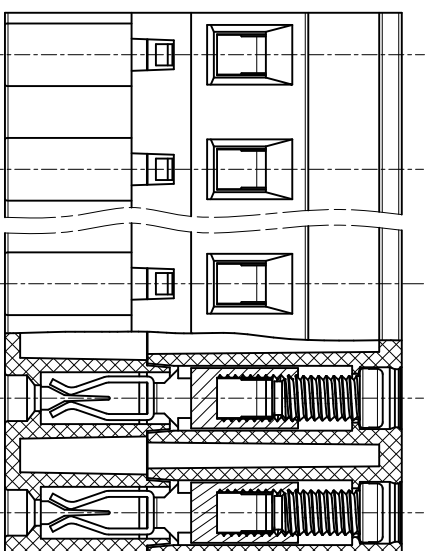
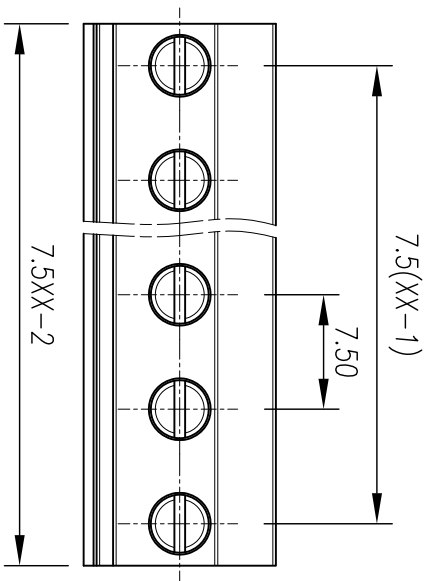




慈溪市万捷电子有限公司 CIXI WANJIE ELECTRONIC CO., LTD

产品规格书
THE SPEC SHEET



两线时只有此卡脚

- 参考标准/Standard: UL, IEC
- 额定电压/Rated voltage: 300V, 450V
- 额定电流/Rated current: 15A, 17.5A
- 接触电阻/Contact resistance: 20mΩ
- 绝缘电阻/Insulation resistance: 5000MΩ/DC500V
- 使用线径/Wire range: 28-14AWG, 1.5mm²
- 耐电压/With standing voltage: AC 2000V/1 Min
- 机械性能/Mechanical: 扭矩/Torque: 0.5Nm(4.5lb.in)
- 剥线长度/Strip Length: 7.8mm
- 温度范围/Temp Range: -40°C~+105°C
- 尺寸/Dimensions: 间距/Pitch: 7.5mm
- 极数/Poles: 2/2dp
- 材料及电镀/Material: PA66, UL94V-0
- 塑料/ Housing: M3 Steel, Zn plated
- 螺丝/Screws: Phosphor bronze, Ni plated
- 夹子/Clamp: Brass, Ni plated
- 方夹/Cage:

linear dimension(Tolerances Standard GB/T 14486-2008)

tolerance	±0.1	±0.14	±0.19	±0.25	±0.32	±0.43	±0.57	±0.72	±0.88	±1.05	±1.25	0.5	0.025	0.06	0.12	0.4	
variable range	6 to	6 to	10 to	10 to	18 to	30 to	50 to	80 to	120 to	160 to	200 to	250 to	all to	5 to	5 to	30 to	120 to

慈溪市万捷电子有限公司
CIXI WANJIE ELECTRONIC CO., LTD

单位/UNITS: mm

尺寸/SIZE: A4

比例/SCALE: 2:1

名称/TITLE: WJZEDGB-7.5-XXP-1YV-00A

第三视图/THIRD ANGLE PROJECTION