



慈溪市万捷电子有限公司
CIXI WANJIE ELECTRONIC CO., LTD

产品规格书
product specification

电气性能/Electrical

参考标准/Standard: UL IEC
 额定电压/Rated voltage: 300V 320V
 额定电流/Rated current: 15A 20A
 接触电阻/Contact resistance: 20mΩ

耐电压/Withstanding voltage: AC2000V/1Min

绝缘电阻/Insulation resistance: 500MΩ/DC5000V

机械性能/Mechanical

温度范围/Temp. Range: -40°C~+105°C
 瞬间温度/MAX Soldering: +250°C, for 5 Sec

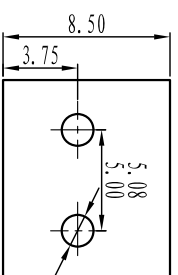
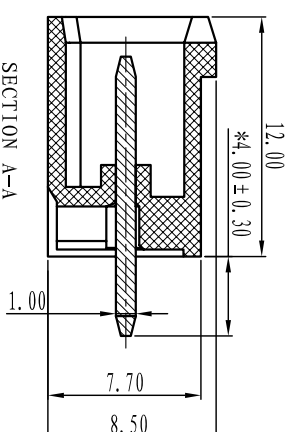
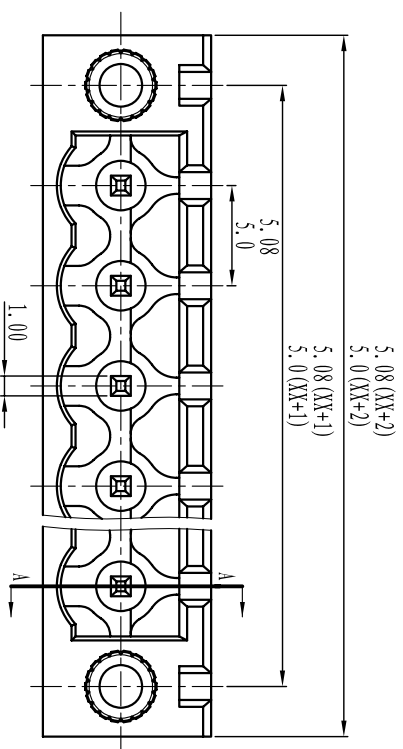
尺寸/Dimensions

间距/Pitch: 5.00mm, 5.08mm

极数/Poles: 2P-24P

材料及电镀/Material

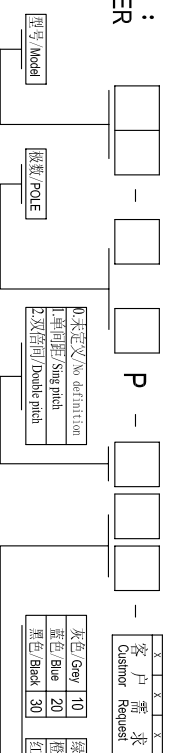
塑件/Housing: PA66, UL94V-0
 焊针/Pin header: Brass, Tin plated
 螺母/Nut: M2.5 Brass



TOLERANCES EXCEPT AS NOTED

	linear dimension	fillet	chamfer	short angle sid					
variable range	over 6 to 6	over 30 to 30	over 120 to 120	over 480 to 480	dll	to 6 to 6	over 6 to 6	over 10 to 10	over 50 to 50
tolerance	±0.1 to 6	±0.2 to 30	±0.3 to 120	±0.5 to 480	±0.9 to 480	±0.2 to 6	±0.5 to 6	±1 to 10	30° to 50°
									10° to 20°
									0.5 to 0.5
									0.025 to 5
									0.06 to 30
									0.12 to 120
									0.4 to 120

订购方式：
HOW TO ORDER



颜色/Color	10	20	30	40	50	60	70	80	90
灰色/Grey	10								
蓝色/Blue		20							
黑色/Black			30						
绿色/Green				40					
橙色/Orange					50				
红色/Red						60			
透明/transparent							70		
黄色/Yellow								80	
白色/White									90

单位/UNITS: mm 尺寸/SIZE: A4 比例/SCALE

慈溪市万捷电子有限公司
CIXI WANJIE ELECTRONIC CO., LTD

名称/NAME: WJ2EDCWM-XP-1YY-00A

第一视角/FIRST ANGLE PROJECTION