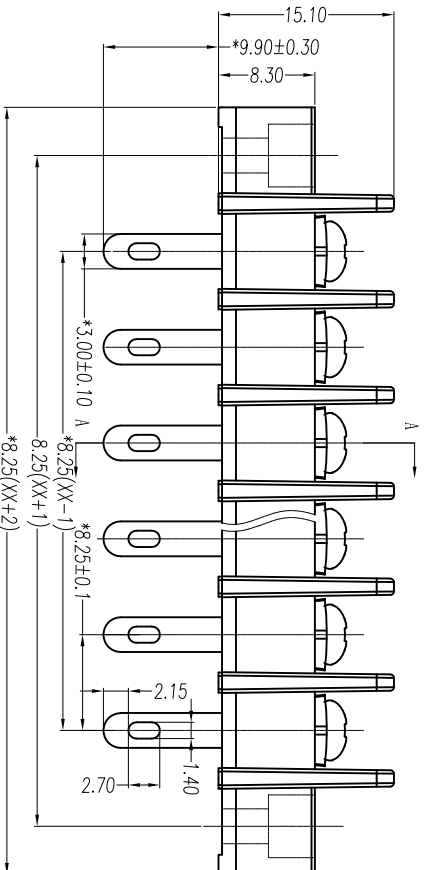
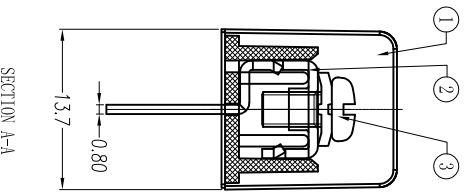
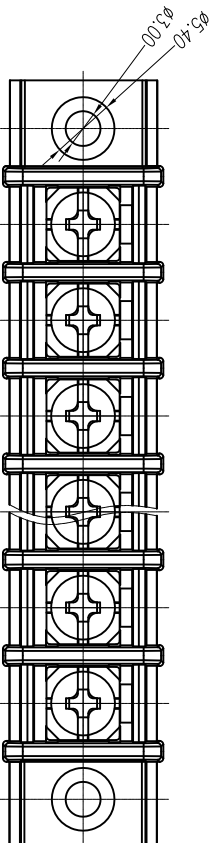
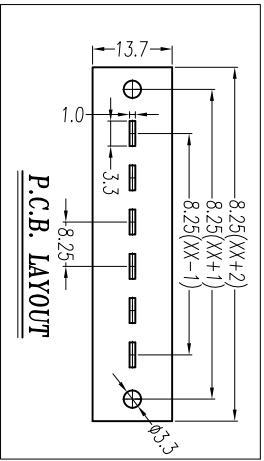




# 慈溪市万捷电子有限公司

## CIXI WANJIE ELECTRONIC CO., LTD

产品规格书  
THE SPEC SHEET



### 电气性能/Electrical

参考标准/Standard	UL	IEC
额定电压/Rated voltage	300V	450V
额定电流/Rated current	15A	24A
接触电阻/Contact resistance	20mΩ	
绝缘电阻/Insulation resistance	500MΩ	DC500V

### 使用线径/Wire range

22~14AWG 1.5mm<sup>2</sup>

### 耐电压/With standing voltage

AC 2000V/1 Min

### 机械性能/Mechanical

#### 扭矩/Torque

0.5Nm (4.5l.b.in)

#### 温度范围/Temp. Range

-40°C~+105°C

#### 瞬时温度/MAX Soldering

+250°C, for 5 Sec

### 尺寸/Dimensions

#### 间距/Pitch

8.25mm

#### 极数/Poles

2~24p

### 材料及电镀/Material

塑料/Housing	PA66, UL94V-0
螺丝/Screws	M3.0 Steel Ni plated
焊脚/Pin header	Brass 0.8t Tin plated

linear dimension (Tolerances Standard GB/T 14486-2008)

tolerance	±0.1	±0.14	±0.19	±0.25	±0.32	±0.43	±0.57	±0.72	±0.88	±1.05	±1.25	0.5	0.025	0.06	0.12	0.4
variable range	6 to 10	6 to 10	10 to 18	10 to 30	18 to 30	30 to 50	30 to 80	50 to 80	50 to 120	80 to 160	120 to 200	200 to 250	5 to 120	5 to 30	30 to 120	120 to 120
tolerance	over	over	over	over	over	over	over	over	over	over	over	all	over	over	over	over

第三视图/THIRD ANGLE PROJECTION



慈溪市万捷电子有限公司  
CIXI WANJIE ELECTRONIC CO., LTD



名称/TITLE  
WJ35HM-XXP-1YY-00A