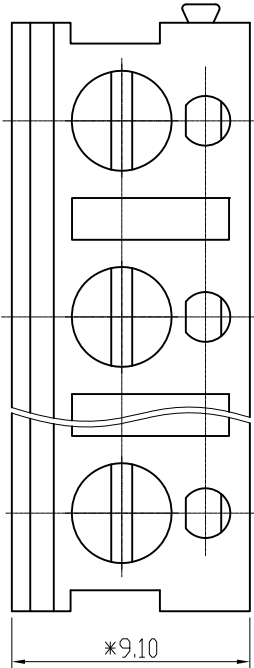
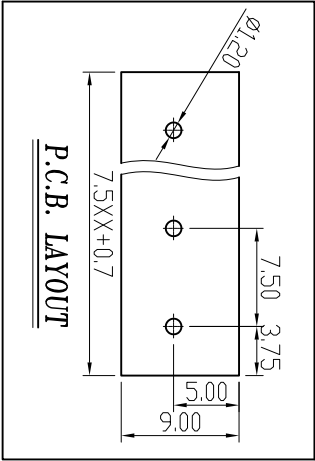


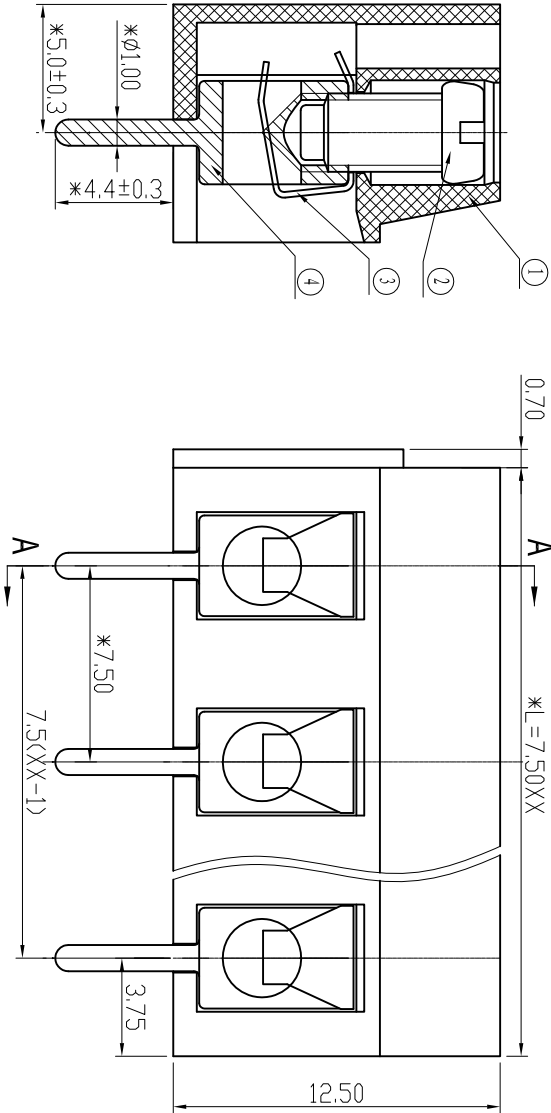
慈溪市万捷电子有限公司
CIXI WANJIE ELECTRONIC CO., LTD

产品规格书
THE SPEC SHEET



电 气 性 能/Electrical

参考标准/Standard	UL	IEC
额定电压/Rated voltage	300V	250V
额定电流/Rated current	16A	17.5A
接触电阻/Contact resistance	20mΩ	
绝缘电阻/Insulation resistance	500MΩ/DC500V	
使用线径/Wire range	22~14AWG	1.5mm ²
耐 电 压/Wrth standing voltage	AC 2000V/1 Min	
机 械 性 能/Mechanical		
扭矩/Torque	0.5Nm(4.5Lb.in)	
剥线长度/Steip Length	4.5-5mm	
温度范围/Temp.Range	-40°C~+120°C	
瞬时温度/MAX Soldering	+250°C, for 5 Sec	
尺 寸 /Dimensions		
间距/Pitch	7.5mm	
极 数/Poles	2~24p	
材 质 及 电 镀/Material		
塑 件 /Housing	PA66, UL94V-0	
螺 丝 /Screws	M3.0 Steel Zn plated	
焊 脚 /Pin header	Brass, Tin plated	
弹 片 /Shrapnel	Phosphor bronze, Ni plated	



linear dimension(Tolerances Standard GB/T 14486--2008)															
	over	over	over	over	over	over	over	over	over	over	over	over	over	over	over
variable	6	10	18	30	50	80	120	160	200	250	all	5	30	120	
range	to	to	to	to	to	to	to	to	to	to	to	to	to	to	to
tolerance	±0.1	±0.14	±0.19	±0.25	±0.32	±0.43	±0.57	±0.72	±0.88	±1.05	±1.25	0.5	0.025	0.06	0.4

单位 / UNITS	mm	尺寸 / SIZE	A4	比例 / SCALE	7:2
慈溪市万捷电子有限公司 CIXI WANJIE ELECTRONIC CO., LTD					第三视角/THIRD ANGLE PROJECTION
名称 / TITLE	WJ370-7.5-XP-1YY-00A				