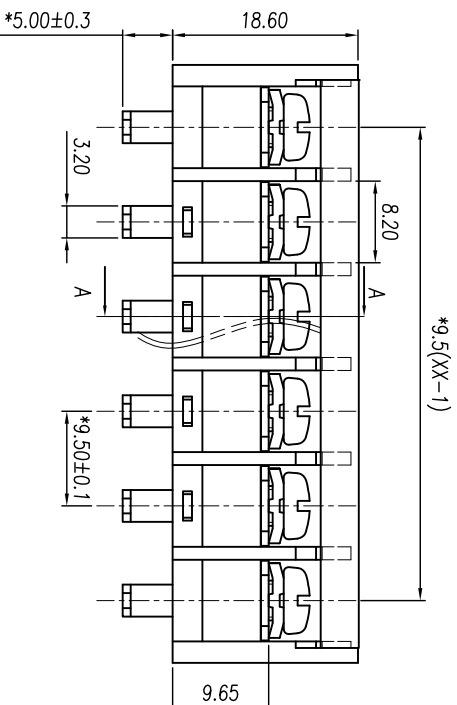
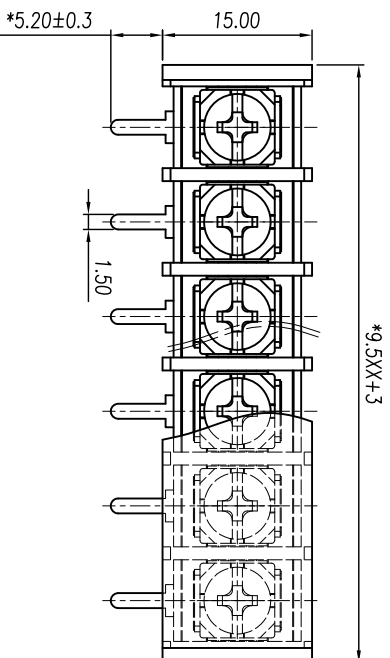
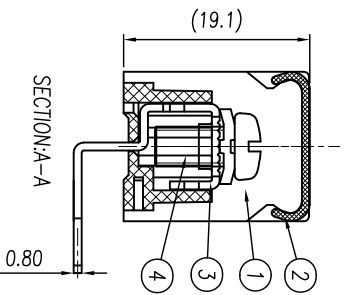
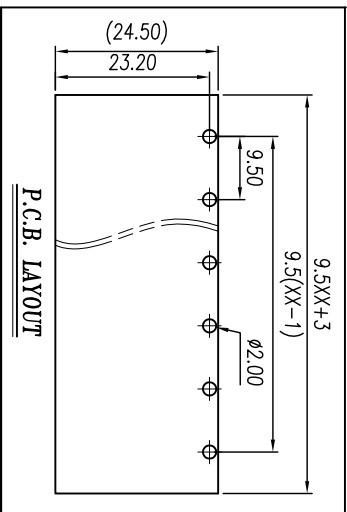




# 慈溪市万捷电子有限公司 CIXI WANJIE ELECTRONIC CO., LTD

产品规格书  
THE SPEC SHEET



### 电气性能/Electrical

参考标准/Standard	UL	IEC
额定电压/Rated voltage	300V	450V
额定电流/Rated current	20A	24A
接触电阻/Contact resistance	20m $\Omega$	
绝缘电阻/Insulation resistance	500M $\Omega$ /DC500V	
使用线径/Wire range	22~12AWG	2.5mm <sup>2</sup>
耐电压/Wrth standing voltage	AC 2000V/1 Min	

### 机械性能/Mechanical

扭 矩/Torque	1.2N $\cdot$ m(10.6Lb.in)
温度范围/Temp.Range	-40 $^{\circ}$ C~+105 $^{\circ}$ C
瞬时温度/MAX Soldering	+250 $^{\circ}$ C, for 5 Sec

### 尺寸/Dimensions

间距/Pitch	9.5mm
极数/Poles	2-22p

### 材料及电镀/Material

塑料件/Housing	PA66, UL94V-0
螺丝/Screws	M4 Steel Ni plated
焊脚/Pin header	Brass 0.8t Tin plated
盖板/Cover	PC,UL94V-2

linear dimension(Tolerances Standard GB/T 14486-2008)	过 6	过 10	过 18	过 30	过 50	过 80	过 120	过 160	过 200	过 250	过 300	过 350	过 400	过 450	过 500	过 550	过 600	过 650	过 700	过 750	过 800	过 850	过 900	过 950	过 1000	
tolerance	±0.1	±0.14	±0.19	±0.25	±0.32	±0.43	±0.57	±0.72	±0.88	±1.05	±1.25	0.5	0.025	0.06	0.12	0.4										

单位/UNITS	mm	尺寸/SIZE	A4	比例/SCALE	4:3
名称/TITLE	第三视图/THIRD ANGLE PROJECTION				
	WJ48R-XXP-1YY-00A				



慈溪市万捷电子有限公司  
CIXI WANJIE ELECTRONIC CO., LTD