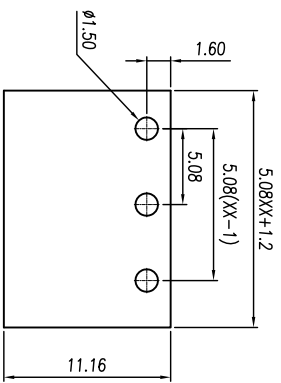


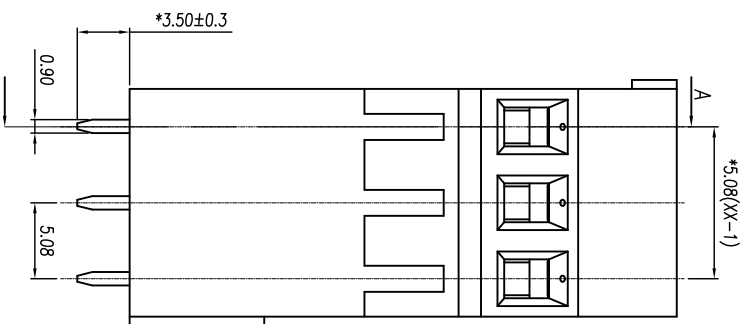
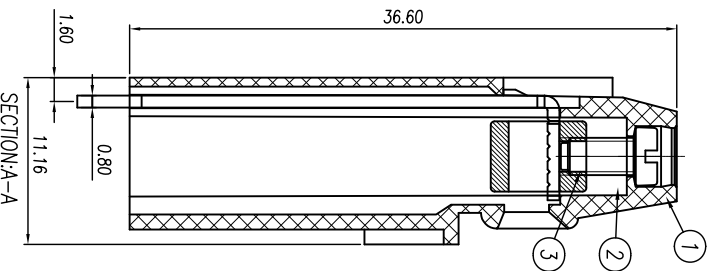
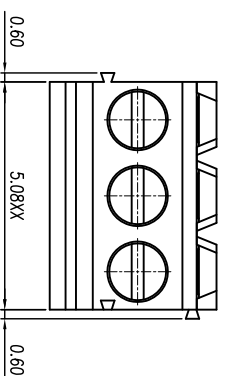


慈溪市万捷电子有限公司 CIXI WANJIE ELECTRONIC CO., LTD

产品规格书
THE SPEC SHEET



P.C.B. LAYOUT



linear dimension	Tolerances Standard GB/T 14486-2008												≡	—	□	//	⊥										
variable range	6 to	6 to	10 to	10 to	18 to	18 to	30 to	30 to	50 to	50 to	80 to	80 to	120 to	120 to	160 to	160 to	200 to	200 to	250 to	250 to	all	5 to	5 to	30 to	30 to	120 to	
tolerance	±0.1	±0.14	±0.19	±0.25	±0.32	±0.43	±0.57	±0.72	±0.88	±1.05	±1.25	0.5	0.025	0.06	0.12	0.4											

电气性能/Electrical

参考标准/Standard

UL IEC

额定电压/Rated voltage

300V 250V

额定电流/Rated current

15A 17.5A

接触电阻/Contact resistance

20mΩ

绝缘电阻/Insulation resistance

500MΩ/DC500V

使用线径/Wire range

30-14AWG 1.5mm²

耐电压/With standing voltage

AC 2000V/1 Min

机械性能/Mechanical

扭矩/Torque

0.4Nm(3.6lb.in)

剥线长度/Strip Length

6-7mm

温度范围/Temp Range

-40°C~+105°C

瞬时温度/MAX Soldering

+250°C, for 5 Sec

尺寸/Dimensions

间距/Pitch

5.08mm

极数/Poles

2-24p

材质及电镀/Material

塑件/Housing

PA66, UL94V-0

螺丝/Screws

M2.5 Steel Zn plated

焊脚/Pin header

Brass 0.8t Tin plated

方块/Cage

Brass, Ni plated

单位/UNITS	mm	尺寸/SIZE	A4	比例/SCALE	2:1
----------	----	---------	----	----------	-----

第三视图/THIRD ANGLE PROJECTION



慈溪市万捷电子有限公司
CIXI WANJIE ELECTRONIC CO., LTD

名称/TITLE

WJE3/508-5.08-XXP-1YY-00A